



Level Set | **LVT**  
Stones & Woodgrains

Interface®

### 刚柔并济，打造完美融合

坚硬与柔软完美融合在一起，打造一个全新的灵性地面设计世界。我们的LVT系列精选自然纹理木材和极富创意的石材，再加之精心独到的设计，与我们丰富的模块地毯产品中所蕴含的天然灵感完美融合，相辅相成。无论您如何进行铺装，它们都能无缝组合、顺畅链接，无需过渡条。

英特飞LVT系列地板由高度耐用的可回收材料组合而成。Ceramor®陶瓷珠涂层保护着地板的表面，将日常磨损和划痕降到最低。高性能底层Sound Choice™和我们模块地毯的作用一样，可以降低噪声影响，并提供出色的声学性能。所有产品均享受相同的15年产品保修。

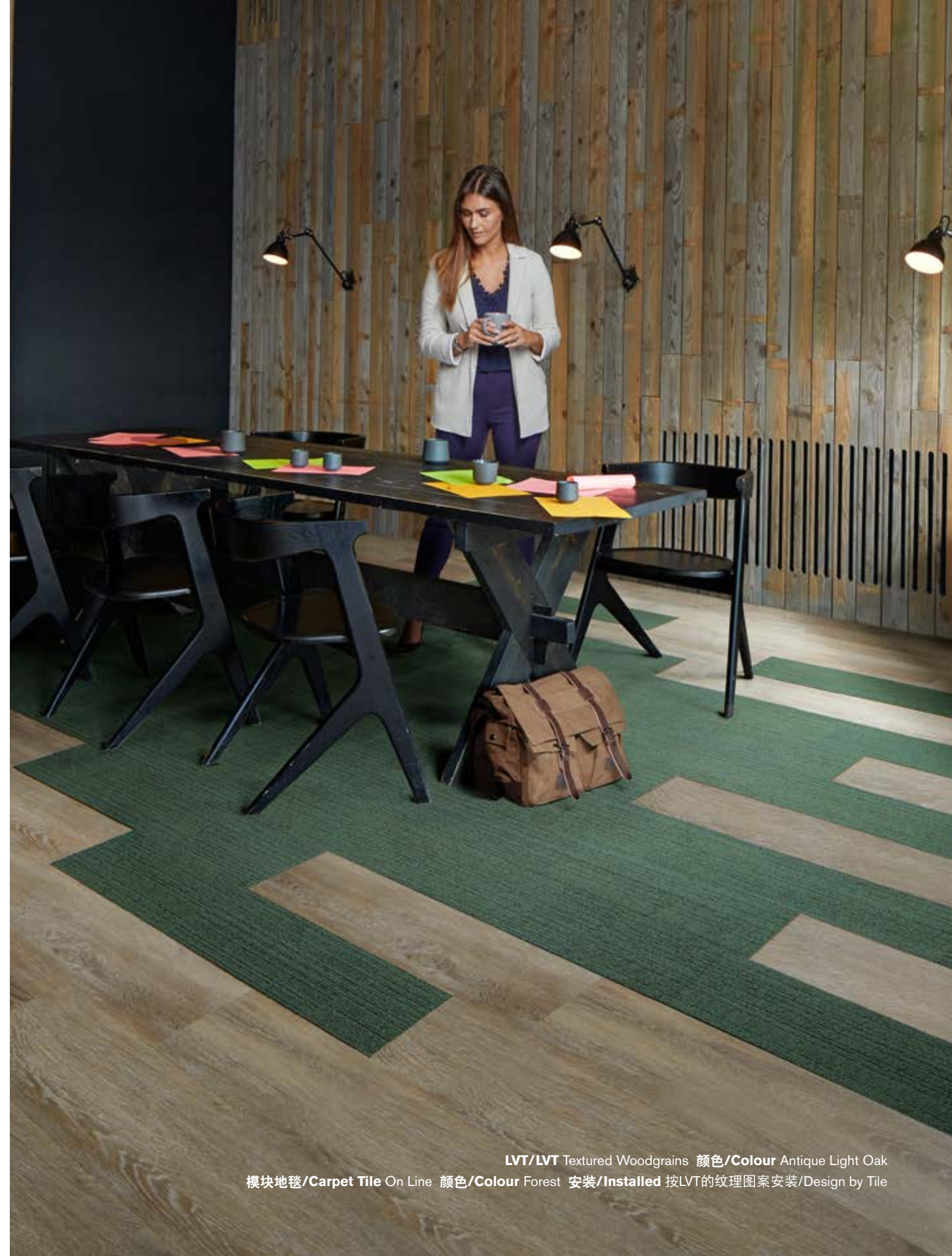
将LVT与模块地毯搭配可以实现两者融合的最佳效果，尽情展现和谐又华丽的风尚。

### Hard meets soft, creating a perfect match

Hard and soft comes together in perfect unity to create a whole new world of inspired floor designs. Our LVT selections of natural and textured wood-grains and creative stones have been thoughtfully designed -- they perfectly integrate, complementing the same natural inspirations seen in our extensive carpet tiles range. No matter how you arrange them, these are designed to mix and flow seamlessly together. In fact, they fit like a glove without the need for transition strips.

Interface LVT is constructed from a combination of highly durable, recyclable layers. Scuffs and scratches from everyday wear are minimized by Ceramor®, a ceramic bead coating that protects the surface layer of the tile. A high performance backing layer, Sound Choice™ acts in the same way as our carpet tiles, reducing noise impact levels and delivering outstanding acoustic properties. And all these are backed by the same 15-year product warranty too.

Get the best of both worlds by pairing LVT with modular carpet tiles, and say hello to harmonious, gorgeous style.





LVT/LVT Textured Stones 颜色/Colour Dark Concrete 安装/Installed 无方向/Non Directional



LVT/LVT Natural Woodgrains 颜色/Colour Winter Grey  
模块地毯/Carpet Tile World Woven | WW895 颜色/Colour Fuchsia Weave 安装/Installed 上下错半/Ashlar



LVT/LVT Textured Woodgrains 颜色/Colour Antique Oak 安装/Installed 人字形/Herringbone



LVT/LVT Natural Woodgrains 颜色/Colour Bamboo 安装/Installed 按LVT的纹理图案安装/Design by Tile



LVT/LVT Natural Woodgrains 颜色/Colour Beech 安装/Installed 上下错半/Ashlar  
模块地毯/Carpet Tile Urban Retreat | UR102 颜色/Colour Granite 安装/Installed 无方向/Non Directional



LVT/LVT Textured Stones 颜色/Colour Distressed Concrete 安装/Installed 无方向/Non Directional



LVT/LVT Textured Woodgrains 颜色/Colour Silver Dune 安装/Installed 人字形/Herringbone

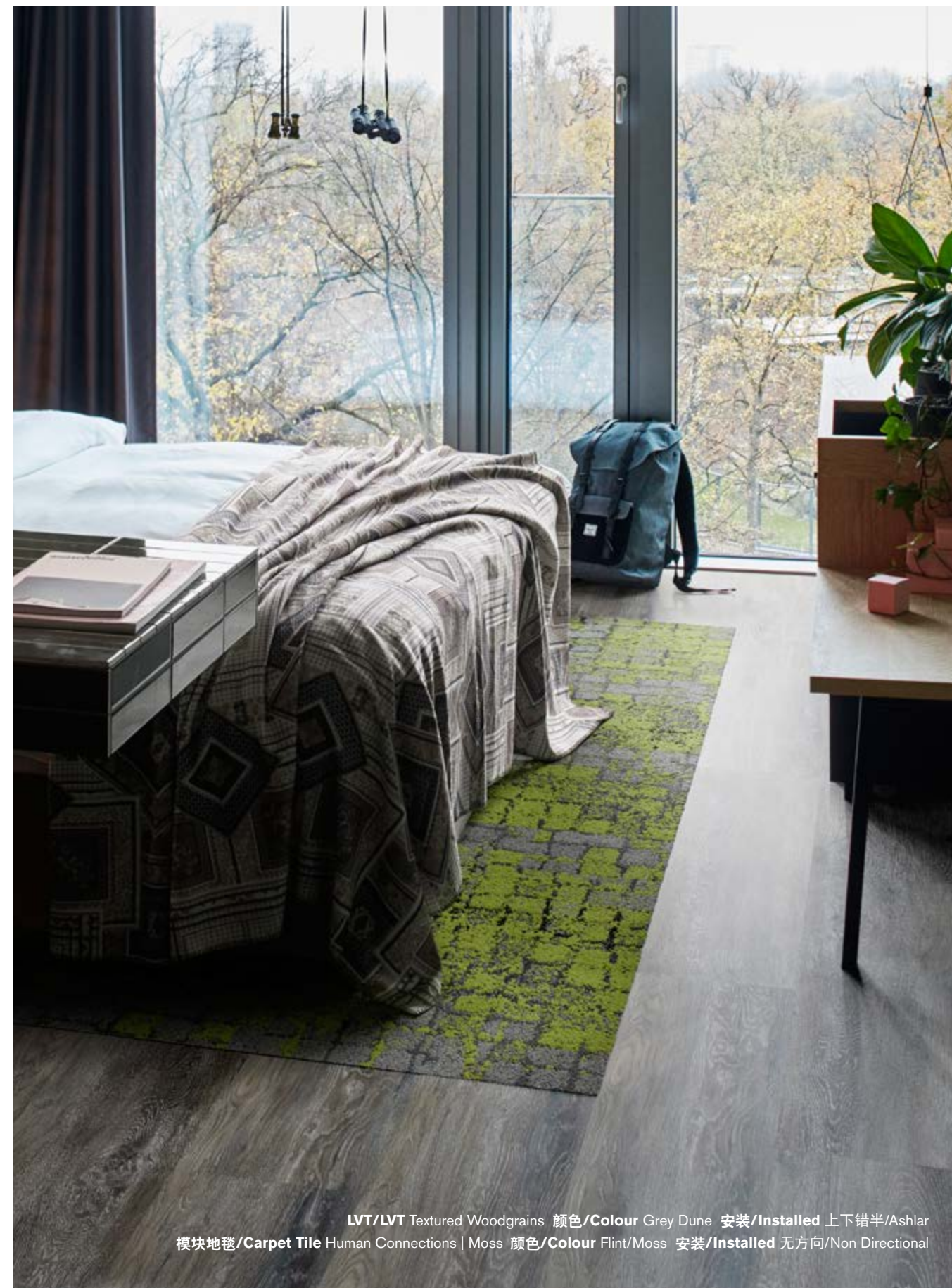


LVT/LVT Textured Woodgrains 颜色/Colour Rustic Oak 安装/Installed 上下错半/Ashlar





LVT/LVT Textured Stones 颜色/Colour Light Concrete 安装/Installed 无方向/Non Directional



LVT/LVT Textured Woodgrains 颜色/Colour Grey Dune 安装/Installed 上下错半/Ashlar  
模块地毯/Carpet Tile Human Connections | Moss 颜色/Colour Flint/Moss 安装/Installed 无方向/Non Directional





LVT/LVT Textured Woodgrains 颜色/Colour Rustic Hickory 安装/Installed 上下错半/Ashlar



LVT/LVT Natural Woodgrains 颜色/Colour Cedar 安装/Installed 上下错半/Ashlar  
模块地毯/Carpet Tile Urban Retreat | UR102 颜色/Colour Flax 安装/Installed 无方向/Non Directional





LVT/LVT Textured Stones 颜色/Colour Medium Concrete 安装/Installed 顺铺/Monolithic  
模块地毯/Carpet Tile Visual Code | Hard Drive 颜色/Colour Pewter HD 安装/Installed 上下错半/Ashlar



LVT/LVT Textured Stones 颜色/Colour Emperor Gray  
模块地毯/Carpet Tile Human Connection | Stone Course 颜色/Colour Red/Stone  
模块地毯/Carpet Tile Human Connection | Rue 颜色/Colour Red 安装/Installed 无方向/Non Directional



LVT/LVT Natural Stones 颜色/Colour Cool Impala Marble  
模块地毯/Carpet Tile Urban Retreat | UR101 颜色/Colour Straw/Glass  
模块地毯/Carpet Tile Urban Retreat | UR102 颜色/Colour Straw 安装/Installed 无方向/Non Directional



LVT/LVT Textured Woodgrains 颜色/Colour White Wash 安装/Installed 人字形/Herringbone





LVT/LVT Natural Woodgrains 颜色/Colour Teak  
模块地毯/Carpet Tile Equal Measure | EM552 颜色/Colour Cobblestone Ave 安装/Installed 上下错半/Ashlar



LVT/LVT Natural Woodgrains 颜色/Colour Sand Dune  
模块地毯/Carpet Tile Global Change | Shading 颜色/Colour Morning Mist 安装/Installed 上下错半/Ashlar

英特飞LVT弹性模块地材和模块地毯，实现硬质与软质表面的无缝过渡。无需任何过渡条。

Interface Modular Resilient LVT and Modular Carpet allow you to seamlessly move from hard to soft surfaces. No transition strip needed.

LVT/LVT Natural Woodgrains 颜色/Colour Storm  
模块地毯/Carpet Tile World Woven WW895 颜色/Colour Heather Weave

## 为什么要选择我们的模块化地面系统? / Why Our Modular Resilient LVT?

### 一体化

*告别过渡条与双层铺装。*我们的弹性模块地材可与我们的模块地毯搭配使用。产品大小和高度相互兼容，可与模块地毯相结合，形成嵌套地毯或者相邻区域，无需任何过渡条。此外还可以省去多层铺设的材料费用，从而节省成本。

### 高度灵活

*打造持久的独特外观。*英特飞LVT弹性模块地板可以延长地面的使用寿命。从拖地等简单维护到有选择性地更换损坏的部分，让地面经得住时间的考验，轻松营造美观舒适的环境。

### 循环利用

*地材不再需要填埋。*LVT弹性模块地板的生产原料全程把控，可以通过ReEntry™计划回收，用于我们的GlasBac™RE再生底背中。

### 降噪

*寂静无声。*选用英特飞配备Sound Choice™底背的LVT弹性模块地板，打造**+正能量空间™**。卓越的降噪效果通过了Quiet Mark™ 认证，减小噪音和楼层之间的声音传播，彰显一流的性能。



### Integrated System.

*Say goodbye to transition strips and doubling up.* Our modular resilient floorings are made to work as a system with our modular carpet tile. The compatible size and height of our products allows you to integrate modular carpet for an inset rug or an adjacent field – no transition strip required. You'll avoid doubling up on materials and save cost.

### Real Flexibility.

*Create a unique look that lasts.* Interface modular resilient LVT makes it easy to extend the life of your floor. From simple maintenance like damp mopping to selectively replacing damaged tiles, your flooring investment will stand the test of time - beautifully and effortlessly.

### Circular System.

*Keep flooring out of the landfill.* Our modular resilient LVT is produced with a controlled material stream so it can be reclaimed and recycled into our GlasBac™RE recycled content backing through our ReEntry™ program.

### Noise Reduction.

*Less distractions.* Interface is helping create **+Positive spaces™** with our LVT with Sound Choice™ backing. It's Quiet Mark™ certified for its superior noise reduction qualities, offering you best-in-class performance for reduced impact sound and floor to floor sound transmission.



## 为什么要选择我们的模块化地面系统? (续) / Why Our Modular Resilient LVT? (continued)



从上到下，  
性能始终如一。

- 1. Ceramor® 涂层。**最大程度减少日常磨损与刮擦。
- 2. 耐磨层。**优质耐磨层，弹性和性能可保持15年。
- 3. 印刷薄膜层。**呈现天然材质以及英特飞创新设计的出色视觉效果。
- 4. 核心片材。**坚固的芯材厚度，减少下方透印。
- 5. 玻璃纤维。**增强尺寸稳定性和灵活性的可控度。
- 6. 核心片材。**坚固的芯材厚度，减少下方透印。
- 7. Sound Choice™。**带来舒适和优异的隔音效果。

### 第三方认证。

**碳中和地材。**英特飞在全球销售的所有地材均为已通过第三方认证的碳中和产品。我们从全局出发，实现碳中和，首先是减少我们产品中的碳足迹，其次是利用碳平衡的方式抵消剩余的部分。

**环保产品声明 (EPD)。**英特飞LVT产品均带有EPD认证。环保产品声明是一项基于按照ISO标准执行的生命周期评估而作出的有关产品成分和环境影响的综合声明。

**可持续性评估。**英特飞LVT产品符合NSF/ANSI 332弹性地材可持续发展评估认证标准。该标准评估的是弹性地材整个生命周期的环境影响。

**室内空气质量。**所有英特飞模块地材产品均符合室内空气质量最高标准。英特飞LVT产品通过了FloorScore®认证，确保极低的有机废气排放量。

### High Performance from Top to Bottom.

- 1. Ceramor® Coating.** Minimizes everyday scratching and scuffing.
- 2. Wear Layer.** High quality layer enabling 15 years of resilience and performance.
- 3. Print Film.** Provides outstanding visuals of natural materials and Interface innovative designs.
- 4. Core Sheet.** Creates a thickness for a stronger core and reduces telegraphing from beneath.
- 5. Fiberglass.** Adds dimensional stability and controlled flexibility.
- 6. Core Sheet.** Creates a thickness for a stronger core and reduces telegraphing from beneath.
- 7. Sound Choice™.** Provides comfort and superior acoustic performance.

### Third Party Certification.

**Carbon Neutral Floors.** All Interface flooring sold globally is third party verified carbon neutral. We've taken a holistic approach to achieve carbon neutrality, first through reducing the carbon footprint of our products and then using carbon offsets for the remainder.

**Environmental Product Declaration (EPD).** Interface LVT products are covered by an EPD. An EPD provides a comprehensive statement of product ingredients and environmental impacts based upon life cycle assessment performed to ISO standards.

**Sustainable Assessment.** Interface LVT meets the certification standards of the NSF/ANSI 332 Sustainability Assessment for Resilient Floor Coverings. This standard evaluates the environmental impact of resilient floor covering for its entire lifecycle.

**Indoor Air Quality.** All Interface modular flooring products meet the highest standards for indoor air quality. Interface LVT is FloorScore® Certified, assuring very low emissions of VOCs.

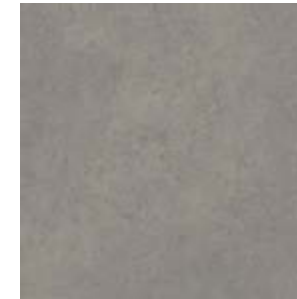
## Level Set | Stones 色系/Colourline



A003-08  
Textured Stones - Light Concrete



A003-11  
Textured Stones - Distressed Concrete



A003-09  
Textured Stones - Medium Concrete



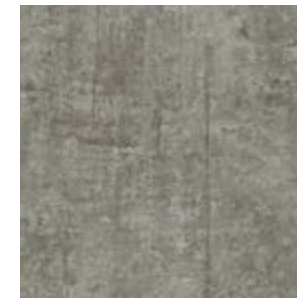
A003-10  
Textured Stones - Dark Concrete



A001-07  
Natural Stones - Travertine



A003-02  
Textured Stones - Cool Polished Cement



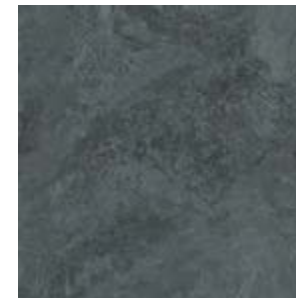
A003-04  
Textured Stones - Emperor Gray



A001-04  
Natural Stones - Warm Impala Marble



A001-02  
Natural Stones - Marone Dark Marble



A001-03  
Natural Stones - Cool Impala Marble





Level Set | Woodgrains 色系/Colourline

---



A004-07  
Textured Woodgrains - White Wash



A004-27  
Textured Woodgrains - Hemlock



A004-22  
Textured Woodgrains - Rustic Hickory



A004-05  
Textured Woodgrains - Grey Dune



A002-08  
Natural Woodgrains - Sand Dune



A004-26  
Textured Woodgrains - Sugarpine



A004-21  
Textured Woodgrains - Rustic Oak



A004-04  
Textured Woodgrains - Distressed Black Walnut



A004-06  
Textured Woodgrains - Antique Light Oak



A002-14  
Natural Woodgrains - Bamboo



A004-20  
Textured Woodgrains - Rustic Cashew



A002-05  
Natural Woodgrains - Storm



A004-19  
Textured Woodgrains - Antique Ash Oak



A002-12  
Natural Woodgrains - Cedar



A002-07  
Natural Woodgrains - Washed Wheat



A004-15  
Textured Woodgrains - Antique Oak



A002-10  
Natural Woodgrains - Teak



A002-06  
Natural Woodgrains - Winter Grey



A002-11  
Natural Woodgrains - Washed Maple



A002-04  
Natural Woodgrains - Beech



A004-17  
Textured Woodgrains - Silver Dune

## 技术参数/Specifications

### Level Set | Woodgrains

产品编号	Textured Woodgrains - A004 Natural Woodgrains - A002	Product Name / Number	Textured Woodgrains - A004 Natural Woodgrains - A002
产品结构	高性能豪华乙烯地板	Product Construction	High Performance Luxury Vinyl Plank
耐磨层厚度	0.55 mm	Wear Layer Thickness	0.55 mm
总厚度 (米制)	4.5 mm	Total Thickness (Metric)	4.5 mm
分类	EN 651 类别 33 (公共场合) EN 651 类别 42 (轻工通用)	Classification	EN 651 Class 33 (heavy contract) EN 651 Class 42 (light industrial general)
声振降噪	ISO 140.8 ΔL <sub>w</sub> = 16dB	Acoustic Impact Noise Reduction	ISO 140.8 ΔL <sub>w</sub> = 16dB
饰面	CERAMOR®, 紫外线稳定陶瓷珠涂层	Finish	CERAMOR® UV Stabilized Ceramic Bead Coating
标称尺寸	25cm x 100cm	Nominal Dimensions	25cm x 100cm

#### 性能参数

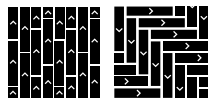
临界热量通	AS ISO 9239-1	>7kW/m <sup>2</sup>
烟度雾	AS ISO 9239-1	<750%.min
尺寸, 公差	ISO 24342	>400 mm < 0.35 mm
	ISO 24342	<400 mm < 0.25 mm
尺寸稳定性	ISO 23999	<0.25%
厚度	ISO 24346	平均值 + 0.20mm
耐光性能	ISO 105-B02标准	≥6
耐热性能	ASTM F1514	ΔE< 8 平均最大值
耐化学品性能	EN-ISO 26987	通过
防火性能	EN ISO 13501-1	类别 BFI-S1
VOC测试	ISO 10580	通过
灵活性	ISO 24344 方法A	通过
静载重	ASTM F970	≤0.005" 1500磅每平方英寸
脚轮磨损	ISO 4918	通过
导热性能	EN 12667	0.16 W/mK
静电性能	EN 1815	<2kV

#### 环保参数

成分和生命周期影响	EPD 高级弹性地板
可持续性评估	NSF/ANSI 332, 符合认证准则
LEED v4	有助于改善室内环境质量 (IEQ): 低放射性材料; M&R;
产品寿命末期	可通过地毯底背回收系统完全回收

#### 技术信息

铺装	详见Interface LVT在线铺装指南
维护	详见Interface LVT在线维护指南
回收	ReEntry® 回收项目
保修	15年标准LVT产品商业质保
铺装方法	上下错半, 人字形



上下错半 人字形

产品规格可能会根据实际生产公差随时更新, 恕不另行通知。不同生产批次的轻微颜色偏差实属正常, 应纳入整体安装规划的考虑范围。产品质保以生产商提供的书面质保文件为准。  
免责声明: 所有其他保证, 包括但不限于有关适用于特定用途、适销性或适用性的默示保证, 本公司概不负责。敬请联系您的销售代表, 获得书面质保文件。

Production specifications are subject to normal manufacturing tolerances and may be changed without notice. Slight variation in colour among different production lots are normal and should be considered in the overall installation plan. Products covered by manufacturer's written warranty only. All other warranties, including without limitation any implied warranties of merchantability of fitness for particular purpose, are hereby disclaimed. Contact your representative for written warranty information.

## 技术参数/Specifications

### Level Set | Stones

产品编号	Textured Stones - A003 Natural Stones - A001	Product Name / Number	Textured Stones - A003 Natural Stones - A001
产品结构	高性能豪华乙烯地板	Product Construction	High Performance Luxury Vinyl Plank
耐磨层厚度	0.55 mm	Wear Layer Thickness	0.55 mm
总厚度 (米制)	4.5 mm	Total Thickness (Metric)	4.5 mm
分类	EN 651 类别 33 (公共场合) EN 651 类别 42 (轻工通用)	Classification	EN 651 Class 33 (heavy contract) EN 651 Class 42 (light industrial general)
声振降噪	ISO 140.8 ΔL <sub>w</sub> = 16dB	Acoustic Impact Noise Reduction	ISO 140.8 ΔL <sub>w</sub> = 16dB
饰面	CERAMOR®, 紫外线稳定陶瓷珠涂层	Finish	CERAMOR® UV Stabilized Ceramic Bead Coating
标称尺寸	50cm x 50cm	Nominal Dimensions	50cm x 50cm

#### 性能参数

临界热量通	AS ISO 9239-1	>7kW/m <sup>2</sup>
烟度雾	AS ISO 9239-1	<750%.min
尺寸, 公差	ISO 24342	>400 mm < 0.35 mm
	ISO 24342	<400 mm < 0.25 mm
尺寸稳定性	ISO 23999	<0.25%
厚度	ISO 24346	平均值 + 0.20mm
耐光性能	ISO 105-B02标准	≥6
耐热性能	ASTM F1514	ΔE< 8 平均最大值
耐化学品性能	EN-ISO 26987	通过
防火性能	EN ISO 13501-1	类别 BFI-S1
VOC测试	ISO 10580	通过
灵活性	ISO 24344 方法A	通过
静载重	ASTM F970	≤0.005" 1500磅每平方英寸
脚轮磨损	ISO 4918	通过
导热性能	EN 12667	0.16 W/mK
静电性能	EN 1815	<2kV

#### 环保参数

成分和生命周期影响	EPD 高级弹性地板
可持续性评估	NSF/ANSI 332, 符合认证准则
LEED v4	有助于改善室内环境质量 (IEQ): 低放射性材料; M&R;
产品寿命末期	可通过地毯底背回收系统完全回收

#### 技术信息

铺装	详见Interface LVT在线铺装指南
维护	详见Interface LVT在线维护指南
回收	ReEntry® 回收项目
保修	15年标准LVT产品商业质保
铺装方法	顺铺, 上下错半, 左右错半, 无方向, 直角回转



顺铺 上下错半 左右错半 无方向 直角回转

产品规格可能会根据实际生产公差随时更新, 恕不另行通知。不同生产批次的轻微颜色偏差实属正常, 应纳入整体安装规划的考虑范围。产品质保以生产商提供的书面质保文件为准。  
免责声明: 所有其他保证, 包括但不限于有关适用于特定用途、适销性或适用性的默示保证, 本公司概不负责。敬请联系您的销售代表, 获得书面质保文件。

Production specifications are subject to normal manufacturing tolerances and may be changed without notice. Slight variation in colour among different production lots are normal and should be considered in the overall installation plan. Products covered by manufacturer's written warranty only. All other warranties, including without limitation any implied warranties of merchantability of fitness for particular purpose, are hereby disclaimed. Contact your representative for written warranty information.

产品编号	Textured Stones - A003 Natural Stones - A001	Product Name / Number	Textured Stones - A003 Natural Stones - A001
产品结构	高性能豪华乙烯地板	Product Construction	High Performance Luxury Vinyl Plank
耐磨层厚度	0.55 mm	Wear Layer Thickness	0.55 mm
总厚度 (米制)	4.5 mm	Total Thickness (Metric)	4.5 mm
分类	EN 651 类别 33 (公共场合) EN 651 类别 42 (轻工通用)	Classification	EN 651 Class 33 (heavy contract) EN 651 Class 42 (light industrial general)
声振降噪	ISO 140.8 ΔL <sub>w</sub> = 16dB	Acoustic Impact Noise Reduction	ISO 140.8 ΔL <sub>w</sub> = 16dB
饰面	CERAMOR®, 紫外线稳定陶瓷珠涂层	Finish	CERAMOR® UV Stabilized Ceramic Bead Coating
标称尺寸	50cm x 50cm	Nominal Dimensions	50cm x 50cm

#### 性能参数

临界热量通	AS ISO 9239-1	>7kW/m <sup>2</sup>
烟度雾	AS ISO 9239-1	<750%.min
尺寸, 公差	ISO 24342	>400 mm < 0.35 mm
	ISO 24342	<400 mm < 0.25 mm
尺寸稳定性	ISO 23999	<0.25%
厚度	ISO 24346	平均值 + 0.20mm
耐光性能	ISO 105-B02标准	≥6
耐热性能	ASTM F1514	ΔE< 8 平均最大值
耐化学品性能	EN-ISO 26987	通过
防火性能	EN ISO 13501-1	类别 BFI-S1
VOC测试	ISO 10580	通过
灵活性	ISO 24344 方法A	通过
静载重	ASTM F970	≤0.005" 1500磅每平方英寸
脚轮磨损	ISO 4918	通过
导热性能	EN 12667	0.16 W/mK
静电性能	EN 1815	<2kV

#### 环保参数

成分和生命周期影响	EPD for LVT
可持续性评估	NSF/ANSI 332, Meets Certification Guidelines
LEED v4	Contributes to IEQ: Low Emitting Materials; M&R; EPD and EPR
End of Life	Fully Recyclable to carpet tile Backing Recycling

#### Technical Information

Installation	See Interface LVT Installation Guidelines online
Maintenance	See Interface LVT Maintenance Guidelines online
Reclamation	Recyclable through ReEntry®
Warranty	15 Year Standard LVT Product Warranty
Installation Methods	Monolithic, Ashlar, Brick, Non Directional, Quarter-Turn



MONOLITHIC ASHLAR BRICK NON DIRECTIONAL QUARTER-TURN

我们已尽可能准确地呈现产品颜色。但是，由于印刷材质的原因，实际产品颜色可能会略有不同。如需查看实际产品的颜色，请订购一片地毯样品。

We have tried our very best to accurately represent product colors. However, due to the nature of printed materials, color of actual products may vary slightly. Please request a sample to see actual product color.

[www.interface.com.cn](http://www.interface.com.cn)

**上海工作室 / Shanghai Studio**

英特飞中国 / Interface China  
电话 / tel: 86-21-6340 3868

**香港工作室 / Hongkong Studio**

英特飞中国 / Interface China  
电话 / tel: 852-2802 0838

**北京工作室 / Beijing Studio**

英特飞中国 / Interface China  
电话 / tel: 86-10-6590 7812

**太仓生产基地 / Taicang Plant**

英特飞中国 / Interface China  
电话 / tel: 86-512- 5373 9888

**广州工作室 / Guangzhou Studio**

英特飞中国 / Interface China  
电话 / tel: 86-139 2645 4400

**澳大利亚 / Australia**

英特飞澳大利亚 / Interface Australia  
本地免费电话 / local toll free: 1800 804 361

**东南亚 / South East Asia**

英特飞亚洲 / Interface Asia  
电话 / tel: 65-6478 1510

**韩国 / South Korea**

电话 / tel: 82-2-555 1734

**日本 / Japan**

英特飞日本 / Interface Japan  
电话 / tel: 81-3-5733 5211

10/2019  
SF0113T0  
AS



Climate change is undeniable. And reversible. Our mission is to prove it. Join the #ClimateTakeBack and help create a climate fit for life.